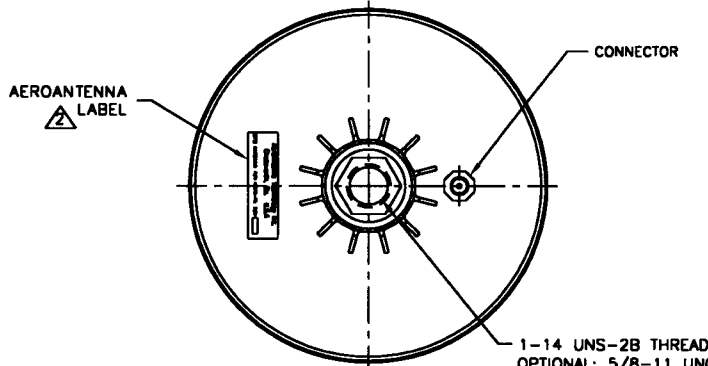
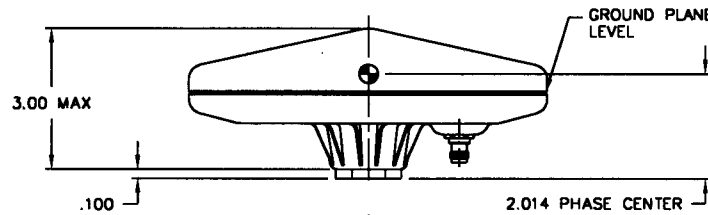
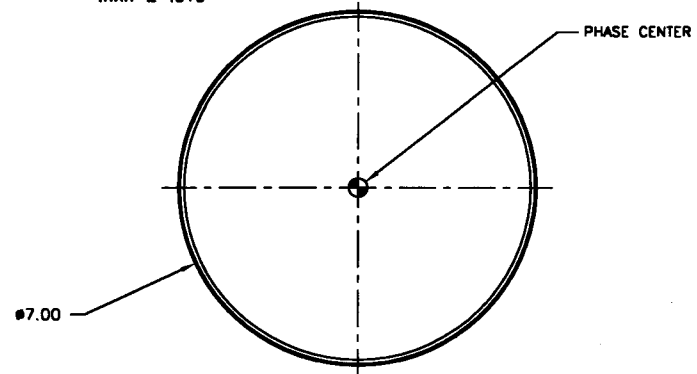


PROPRIETARY NOTICE: This document contains proprietary information of AAT Inc. neither the document nor said proprietary information shall be published, reproduced, copied, disseminated or used for any purpose other than consideration of this document without the express written permission of a duly authorized representative of said Company.

| REVISIONS | | | |
|-----------|-------------------------------|-------------|----------|
| LTR | DESCRIPTION | EFFECTIVITY | DATE |
| G | UPDATE FOR CURRENT PRODUCTION | ECO #2781 | 06/02/98 |

NOTES: UNLESS OTHERWISE SPECIFIED.

- LOGO OPTIONAL.
- LABEL SIZE, SHAPE, AND CONTENTS SUBJECT TO CHANGE WITHOUT NOTICE.
- TOLERANCES: .XX ± .03
.XXX ± .010



SPECIFICATION:

FREQUENCY: 1575 ± 5MHz
 POLARIZATION: RIGHT HAND CIRCULAR Ø
 AXIAL RATIO: 3 dB MAX
 RADIATION COVERAGE: 4.0 dBic Ø =
 -1.0 dBic Ø < Ø < 75°
 -2.5 dBic 75° ≤ Ø < 80°
 -4.5 dBic 80° ≤ Ø < 85°
 -7.5 dBic Ø =

AMPLIFIER:
 NOISE FIGURE: 2.5 dB MAX
 IMPEDANCE: 50 OHMS
 VSWR: ≤ 2.0:1
 BAND REJECTION: 35 dB @ 1625 MHz
 POWER HANDLING: 1 WATT

FINISH: WEATHERABLE POLYMER
 CONNECTOR: SEE TABLE
 WEIGHT: 13 OZ
 ALTITUDE: 12,000'
 TEMPERATURE: -40°C TO +70°C
 DESIGNED TO: DO-160C



Am Grundwassersee 1
 82402 Seeshaupt
 Germany

Tel: +49 (0)8801 9133 40
 Fax: +49 (0)8801 9133 44
 Email: info@ppmgmbh.com

PART NO. DESIGNATION:

AT575-75X-XXXX-XXX-XX-XX-XX

COLOR
 W = WHITE
 S = SMOKE GRAY
 O = OLIVE DRAB

CONNECTOR
 * TNCM = TNC MALE
 TNCF = TNC FEMALE
 * BNCM = BNC MALE
 BNCF = BNC FEMALE
 * MCXM = MCX MALE
 MCXF = MCX FEMALE
 * SMAM = SMA MALE
 SMAF = SMA FEMALE
 * NTPM = N TYPE MALE
 NTPF = N TYPE FEMALE
 * 0000 = NO TERMINATION
 CABLE LENGTH
 * 000 = IN INCHES

MAGNET
 NM = NO MAGNET
 * IM = INTERNAL
 * RM = REMOVABLE
 * HD = HEAVY DUTY

GAIN (± 2 dB)
 00 = PASSIVE
 12 = 12 dB (20 mA)
 26 = 26 dB (35 mA)
 36 = 36 dB (50 mA)
 XX = OTHER

VOLTAGE
 00 = PASSIVE
 05 = 5 VDC
 RG = 5-18 VDC
 XX = OTHER

* = OPTION NOT AVAILABLE WITH THIS MODEL
 STANDARD MODEL = AT575-75W-TNCF-000-RG-26-NM

| CODE IDENT | PART OR IDENTIFYING NO. | NOMENCLATURE OR DESCRIPTION | MATERIAL/SPECIFICATION | ITEM NO. |
|---|-------------------------|-----------------------------|------------------------|--------------|
| LIST OF MATERIALS | | | | |
| DRWN BY | TIVAROVSKY | 4/3/97 | | |
| CHECK | G. SHACHAR | 12/05/95 | | |
| PROJ ENGR | J. AMADO | 12/04/95 | | |
| Q.A. | | | | |
| APPROVAL | J. KLEIN | 12/05/95 | | |
| UNLESS OTHERWISE SPECIFIED | | | | |
| DO NOT SCALE DRAWING TOLERANCES DIMENSIONS ARE IN INCHES UNLESS OTHERWISE SPECIFIED ANGLES ± 1/2° | | | | |
| NEXT ASSY | USED ON | SIZE | CAGE CODE | DRAWING NO. |
| | | B | OUVG2 | AT575-75 |
| APPLICATION | | SCALE NONE | AT575-75G | SHEET 1 OF 1 |

AT575-75

A