

REAL-TIME!

3D Tracker™ Software

PPM & CONDOR 3D MONITORING SYSTEMS

MOTION TRACKING SOFTWARE FOR REAL-TIME DEFORMATION ANALYSIS

OVERVIEW

Condor's 3D Tracker™ software uses Global Positioning System (GPS) technology to compute 3-dimensional positions in real-time for deformation monitoring applications. 3D Tracker has been specifically designed for fixed structures like bridges, dams, oil platforms, and large buildings. The software can also be deployed to monitor natural features such as volcanoes, landslides, and ground subsidence.



natural feature.

What's more, 3D Tracker has been specifically designed for robust performance and continuous operation. The winning result is an advanced and sophisticated system for real-time motion detection.

USEFUL INFORMATION

A graphical user-interface provides up-to-the-second information about each site being monitored. The 3D Tracker screens were carefully designed by engineers, scientists, and geologists to provide the information in the most logical and easy-to-understand manner. The 3D Tracker graphical screens are user configurable and clearly display information such as the current 3D displacement vector (including 3 component vectors), the current rate of change, and the displacement history for each site.



This easy-to-understand interface allows you to focus on what really matters—getting your work done.

ROBUST PERFORMANCE

Once installed, the 3D Tracker software provides continuous operation and robust performance. 3D Tracker runs



unattended and requires little maintenance.

Operators have full remote control over the 3D Tracker monitoring system from anywhere in the world. In fact, a single operator can

manage dozens of different 3D Tracker installations from a single office location.

VERSATILE GPS MOTION DETECTION

The 3D Tracker software can utilize single or dual-frequency GPS receivers (or a mixture of the two) and is capable of millimeter positions in real-time. A series of user-configurable parameters allow for 3D Tracker to be easily tuned for different monitoring applications. Unlike other monitoring approaches, these controls allow the software to be optimized for your unique application (e.g., bridge, dam, building, oil platform, etc.). These features extend comprehensive motion detection capabilities and allow for a sophisticated understanding of the target structure.

CONDOR TEAM

Monitoring the structural integrity of large man-made structures and natural features is serious business.

Condor is the first company to provide turn-key systems for 3D monitoring using Global Positioning System

technology (GPS). With over 17 years experience, our experienced staff of engineers, scientists, software developers, and technicians install and maintain real-time monitoring systems worldwide for a wide range of clients and circumstances.

Whether you are monitoring a volcano, an oil platform, or a large building, Condor's 3D Tracker

software is the right tool for the job.

PPM PRECISE POSITIONING MANAGEMENT GMBH

Grube 39a, D-82377 Penzberg Tel: +49 (0)8856 80 30 980 Fax: +49 (0)8856 80 30 988

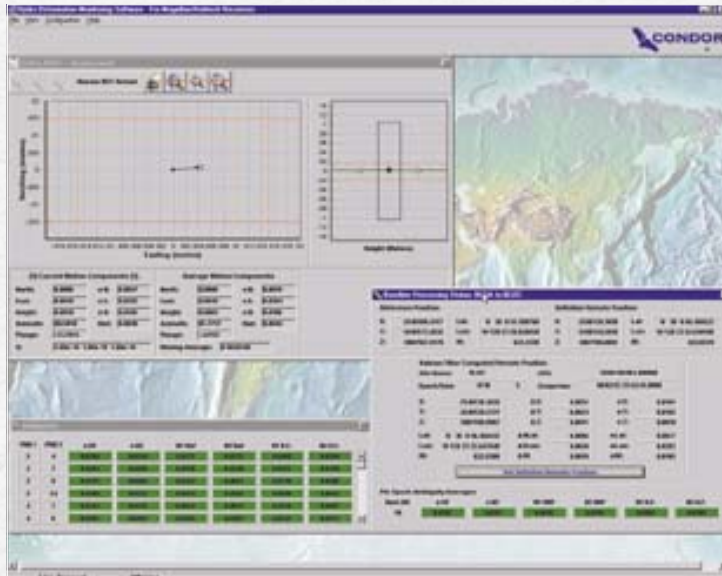
Website: www.ppmgmbh.com • E-mail: info@ppmgmbh.com

3D Tracker™ Software

Standard Features

GRAPHICAL INTERFACE

- Graphical-user-interface displays the following information in real-time for each station:
- 3D map display for each site monitored
- Strip chart display of current and historical rate of change for each site
- Strip chart display of current and historical site displacement in component vectors for each site
- Graphical and numerical display of error estimates for each site
- Numerical display of all information for each site (vectors, azimuth, plunge, error estimates etc.)
- Windows 95/NT 32-bit architecture
- Multithreaded and multitasking design



FLEXIBLE ARCHITECTURE

- Simultaneous real-time monitoring of multiple sites
- Single or dual-frequency GPS receiver processing (including mixtures of the two)
- Multiple baseline processing for a single site (done simultaneously)
- Survey mode for accurately surveying sites prior to start of monitoring
- True, real-time processing at rates as fast as 20Hz

AUTOMATED ALARMING

- User-definable automatic warning alarms based upon:
 - North motion
 - South motion
 - East motion
 - West motion
 - Up motion
 - Down motion
 - Rate of change (for each of the above components)
 - Absolute displacement
- Alarms can be sent via email or page

AUTOMATED DESIGN

- 3D Tracker allows for unattended operation
- 3D Tracker can be remotely accessed from anywhere in the world
- All system parameters can be updated remotely
- Web page module allows you to automatically route all 3D Tracker information in real-time to a secure web page

Suggested PC Requirements

MINIMUM COMPUTER SYSTEM

- Pentium III or higher
 - 450 MHz
 - 256 MB RAM
 - 9.0 GB SCSI hard drive
- Super XGA 1280X1024 / High-End 16 MB Video Card
- Windows NT Workstation

Ordering Information

PRODUCT / PART NUMBER

3D Tracker Software / 3DT-SM-100

Site License (base or remote) / 3DT-LM-100

PPM PRECISE POSITIONING MANAGEMENT GMBH

Grube 39a, D-82377 Penzberg Tel: +49 (0)8856 80 30 980 Fax: +49 (0)8856 80 30 988

Website: www.ppmgmbh.com • E-mail: info@ppmgmbh.com