

**xPro**  **Log**

**CAN-Bus- / GPS-Datalogger**



————— **Suchy Data Systems** —————



# xProLog - universal CAN-Bus and GPS Datalogger

## xProLog - CAN-Bus and GPS-Datalogger

xProLog is a compact stand-alone measurement system for data acquisition of CAN- GPS- and serial data streams. Data sets are stored on an integrated SD-Card. Optionally the system is equipped with an integrated high sensitivity GPS receiver.

xProLog is a multi-purpose datalogger and is the ideal system for long-term data acquisitions.

Depending on the software equipment the following functions can be realized:

- CAN-Bus datalogger for up to 2 separate CAN-Busses
- Logging of GPS data with up to 4 Hz
- Datalogger for data on a serial interface
- Driver guidance system with connectable separate driver display
- Access to GM-Single-Wire-CAN
- Gateway function CAN to USB or V24
- Gateway function GPS to USB or V24



## Setup via Windows Software Package

With the Windows Software Package „xProWin“ the acquisition task can be configured individually. The setup is downloaded via USB- or V24-Interface.

xProLog collects the measurement data using a powerful 32 bit Microprocessor unit and stores the data in a Windows compatible FAT file on an integrated SD-Card. Thus xProLog is a stand alone datalogger with considerable storage capacity.

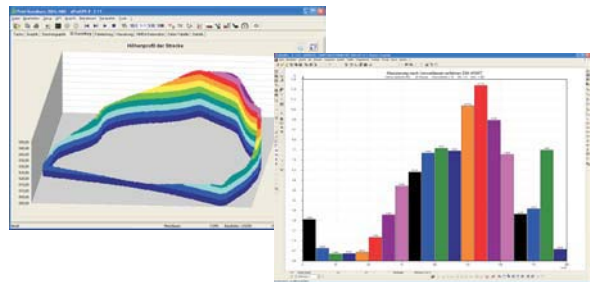
Data transfer can be done either by exchanging the SD-Card or by uploading the file via USB or serial interface.



## xProWin – Data Analysis

As an add-on to xProLog we offer an extensive data analysis software module. The software includes various graphical and tabular presentations for a vast of different tasks:

- Multiple graphical and spreadsheet presentations of the measurement data
- Several filter functions for smoothing the graphs and to suppress spikes
- Statistical functions
- Classification complying with DIN 45667
- Export to Microsoft EXCEL



## System Hardware

The system is equipped with battery backup to bridge temporary loss of power supply while starting the engine or short-term voltage drop-outs.

Every input is equipped with an additional status LED. The LEDs show the current state of operation and visualize incoming data on the respective channel. The status LED of the SD-Card is blinking while the system is in acquisition mode and is storing data.



## Technical Data

Power Supply:	9 ... 18 V DC
Integrated Backup Battery:	NiMh
Power Consumption:	100 mA ... 250 mA
Weight:	0,5 kg
Size:	164 x 107 x 35 mm

## Further Information and technical support:

Suchy Data Systems GmbH  
St.-Wolfgang-Straße 14b

D - 82216 Maisach

Suchy Data Systems GmbH © 09/2004

tel.: +49-8135-8033

fax: +49-8135-8393

email: [info@suchy-data-systems.com](mailto:info@suchy-data-systems.com)

web: [www.suchy-data-systems.com](http://www.suchy-data-systems.com)

Errors and technical changes reserved



Grube 39a  
82377 Penzberg  
Germany

Tel.: +49 (8856) 80 30 980  
Fax: +49 (8856) 80 30 988  
Email: [info@ppmgbh.com](mailto:info@ppmgbh.com)  
Web: [www.ppmgbh.com](http://www.ppmgbh.com)