

THALES



MobileMapper™ Pro Package

**>> MANAGE YOUR FIELD ASSETS
WITHOUT DEPLETING YOUR
FINANCIAL ASSETS**



MobileMapper Industrial Strength Mapping Solution

MobileMapper, the most cost effective and easy-to-use GIS mapping solution, has now become even more powerful with the introduction of sub-meter post-processing as a standard feature. You will continue to see the 2-3 meter real-time accuracy in the field, but you can now differentially correct your data back in the office, delivering 70 cm

accuracy on baselines up to 50 km.

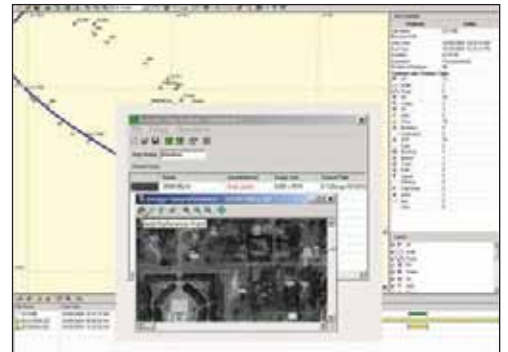
Post-processing does not compromise the renowned ease-of-use of MobileMapper. MobileMapper Office software automatically identifies the field and base station files and can even search the internet for suitable base station data. Advanced algorithms in the MobileMapper Office software assures that sub-meter accuracy is delivered at the click of a button.

MobileMapper continues to offer powerful yet easy-to-use features such as:

- Point, line and area mapping from an easy to learn and use menu structure.
- Expandable, removable SD card memory for reliable data transfer to and from the office.
- Standard, off-the-shelf AA battery power for maximum convenience.



- Area calculation in the field for real-time area determination. Area data can be post-processed in the office to enhance accuracy.
- Offset measurement for all feature types including point, line and area. This function eliminates the need to physically occupy a feature; you simply need to input the distance and bearing to the feature.
- Nesting increases data collection efficiency by allowing the collection of additional features while mapping a line or area. For example, you can map all of the street infrastructure while collecting a road centerline.
- Grid mapping functionality – create a virtual grid in the MobileMapper for sampling evenly throughout an area, such as measuring the degree of weed infestation throughout a field.
- Multiple language support includes: Chinese, Dutch, English, French, German, Lithuanian, Russian, Spanish and Polish.



MobileMapper Office

Connecting Field Assets with Geographic Information Systems

A powerful, easy-to-use software tool, MobileMapper Office provides convenient features such as:

- Simply load your GIS file into MobileMapper Office and generate a full feature library with the click of a button.
- Uploading of base maps to MobileMapper or directly onto an SD card.
- Quick and easy editing and exporting of data to MobileMapper or your GIS. Includes support for: shapefiles, .MIF, .DXF and .CSV.
- Create vector background maps for use in the field.
- Raster image support – use georeferenced images or create background maps from raw image files.



Applications

Get GIS Sub-Meter Accuracy Without Compromise

Agriculture

Ideally suited for agricultural applications, MobileMapper gives you the power to make accurate area and boundary measurements on native, fallow or cultivated parcels of land. MobileMapper is an excellent tool for mapping fields that may be eligible for subsidies such as European Commission aid payments or US crop insurance.

Using the grid function, field surveys for weed control or soil sampling can be accurately and efficiently completed without the need for manually setting out a grid.

Forestry

The exceptionally sensitive GPS receiver at the core of the MobileMapper means that it performs well in difficult signal environments such as under dense foliage. Applications include mapping fire roads, lease boundaries or forest infestations.



Utilities and Local Government

The MobileMapper is able to take any supported GIS file into the field, update it and transfer it back to the office GIS. This enables any utility or local government worker to navigate to field infrastructure, update the GIS data with any modifications made and easily transfer this file back to the office.



MobileMapper Accessories

Add Even More Flexibility and Convenience to your MobileMapper

MapSend® DirectRoute™

Turn-by-turn navigation made easy with MobileMapper and MapSend Direct Route software. Stop wasting time reading paper maps! Easily navigate to street addresses and points of interest to increase your efficiency and start collecting GIS data faster.

MapSend DirectRoute provides detailed street maps, automated routing, turn-by-turn visual guidance and audio prompts for fast, convenient navigation to your next job site. Field crews have never been this efficient!



Vehicle Accessories

Conveniently mount MobileMapper in your truck, car or virtually any vehicle with our full line of easy to install mounting brackets. From dashboard to handlebars, we have a bracket that meets your needs for optimal screen viewing, even under rugged off-road conditions.



Improve positional accuracy and signal availability in your vehicle with the MobileMapper external GPS antenna. Our antenna magnetically mounts to metallic surfaces such as vehicle roofs making navigation or collection of field data from a vehicle more reliable and accurate.



MobileMapper Beacon

A differential correction receiver with Bluetooth® wireless technology, MobileMapper Beacon is an extremely compact, all-in-one beacon correction receiver. It easily



connects to MobileMapper via the optional serial cable, offering you unlimited access to free, real-time DGPS corrections from beacon networks around the world.

MobileMapper and MobileMapper Beacon make a tremendously powerful combination for users that demand convenient and reliable real-time, differential corrections. Powered by 4 AA batteries and designed for maximum portability under rigorous conditions, MobileMapper Beacon provides RTCM SC-104 DGPS corrections via cabled connection or Bluetooth wireless technology.



Featuring auto-tune capabilities, MobileMapper Beacon offers extreme convenience and requires no set-up with nearly any RTCM compatible GPS receiver. Turn-it-on, connect and go – it's that easy.

Thales

Mobile Mapping Solutions Contact Information

In France +33 2 28 09 38 00 • Fax +33 2 28 09 39 39

In Russia +7 095 956 5400 • Fax +7 095 956 5360

In the Netherlands +31 78 61 57 988 • Fax +31 78 61 52 027

Email mobilemappingemea@thalesnavigation.com

Web site www.thalesgroup.com/navigation



Grube 39a
82377 Penzberg
Germany

Tel.: +49 (8856) 80 30 980
Fax: +49 (8856) 80 30 988
Email: info@ppmgmbh.com
Web: www.ppmgmbh.com

THALES